

The Classic Center
300 North Thomas Street
Athens, GA 30601

Theatre Loading Dock GPS Coordinates
33 Degrees 57' 34.86" N
83 Degrees 22' 18.20" W



THE CLASSIC CENTER THEATRE

TECHNICAL PACKETS

The Classic Center Theatre is a 2,000+ seat performing arts venue with a raked house that includes two balconies. The facility incorporates a full theatrical fly rail counterweight system and full sound and lighting capabilities, as well as a spiral orchestra lift.

Table of Contents

Stage & House Basics2

 Stage Information & Measurements2

 Loading Dock Information & Measurements3

 Stage Layout & Distance Diagrams4

 Backstage Information & Measurements5;6

 House Information & Internal Measurements7

 House Seating Diagram8

Theatre FAQ.....9

Power and Lighting.....11

 Power & Lighting Inventory11

 Lighting Positions & Angles.....12

 House Lighting Dimmers & Instruments12

 Lighting Instrument Plot13

Theatre Audio System.....14

 Audio Information & Inventory.....14

 Midhouse Mix Position Information.....15

Theatre Rigging & Fly-Rail Systems16

 General Information.....16

 Theatre Line Schedule17

 Soft Goods18

 Theatre Rigging Attachment Points.....19

STAGE & LOADING DOCK INFORMATION



Stage

Stage Type: Proscenium

Curved apron with Pit at stage level

Straight apron when Pit is down

Stage Floor: Oak, stained dark ebony

**Please note the stage is not self-sealing. Drilling or lagging into the floor is prohibited, unless cleared in advance. There will be a charge associated with stage repair.*

Basic Stage Measurements:

Proscenium Height: 31'6"

Proscenium Width: 54'6"

Distance from downstage apron edge to the plaster line: 6'

Total Stage depth from plaster line to upstage wall: 42'5"

Stage width from center line:

SL Wall: 52'

SR Wall (Fly-rail): 45'

Stage wing space:

SL: 24'6" wide x 42'5" deep x 75' high

SR: 18" wide x 42'5" deep x 75' high

Stage Deck Weight Limits:

Live loads – 250 pounds per square foot

Static or dead loads – 170 pounds per square foot

STAGE & LOADING DOCK INFORMATION CONTINUED

Orchestra Pit Type: Gala Spiral Lift

Distance from downstage edge of apron to downstage edge of pit at center: 10' 6"

Pit downstage curves from 10' 6" at center to 2' 6" at stage right and stage left

Pit floor to stage height at "audience" or seated level- 3' 6"

Pit floor to stage height at "intermediate" depth- 6' 6"

Pit floor to stage height at "storage" depth- 7' 11"

Pit may be set at any level between stage and "storage"

Loading Dock

Located at stage left

Dock Height: 3' 10"

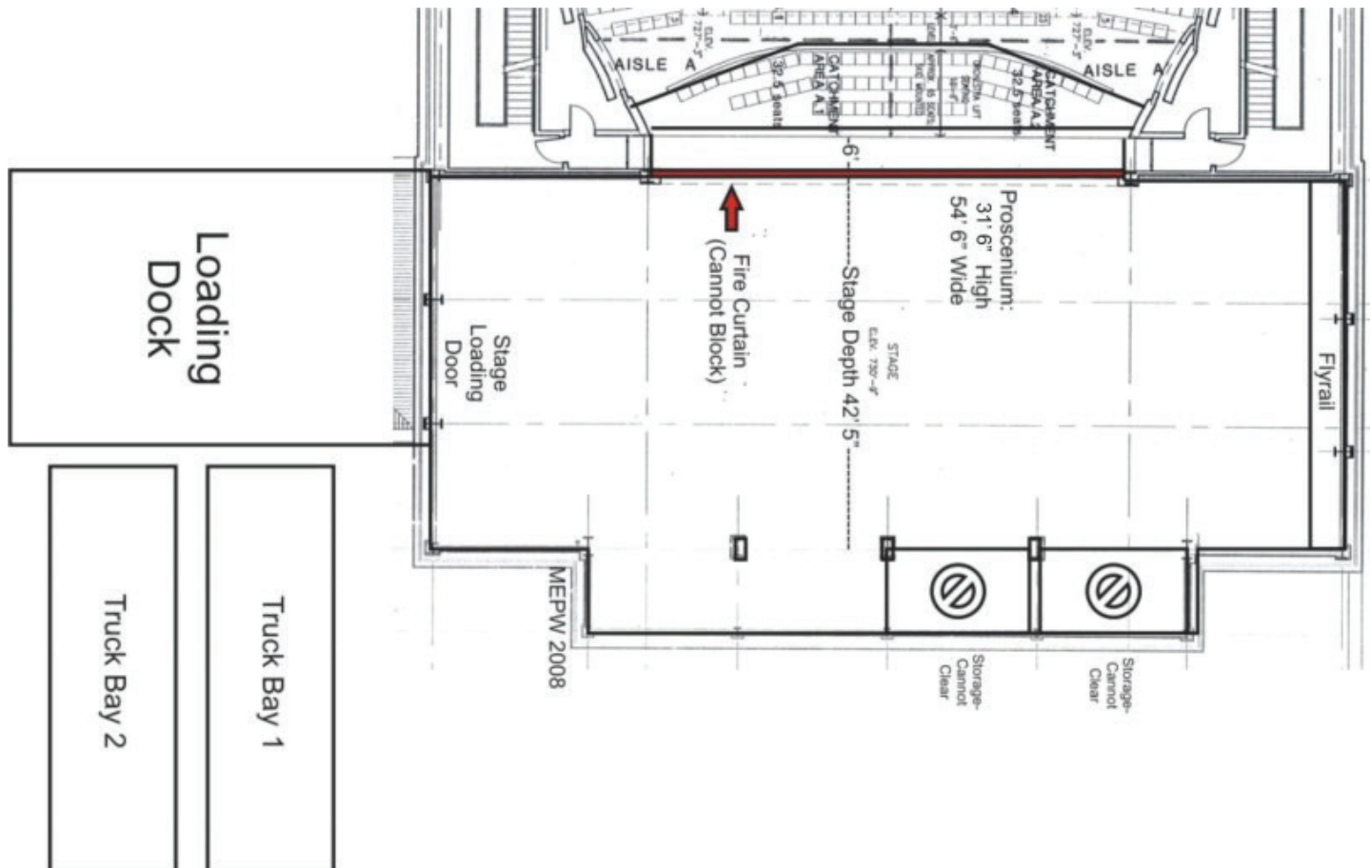
Door Height: 12' 5" | Door width 10' 2"

Load-In point: directly onto dock at stage level

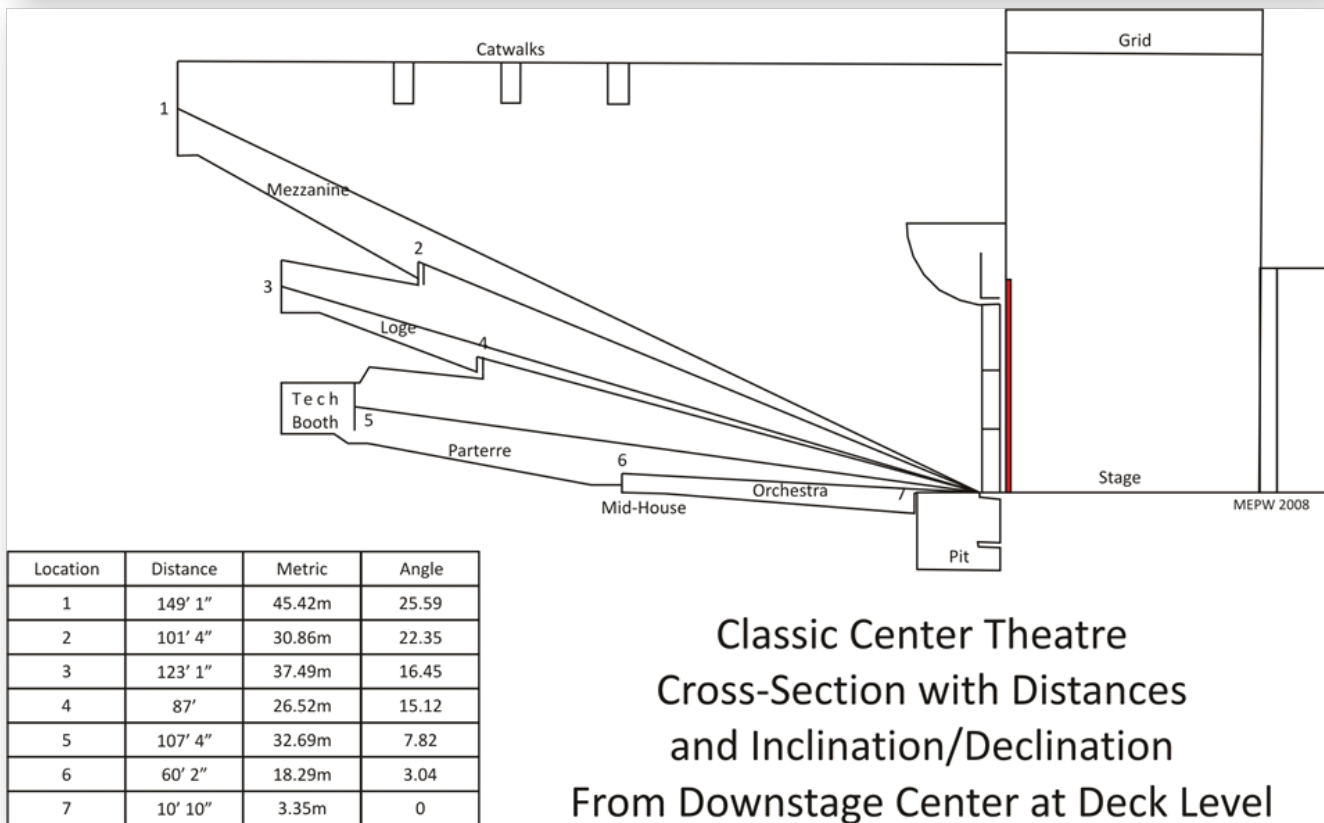
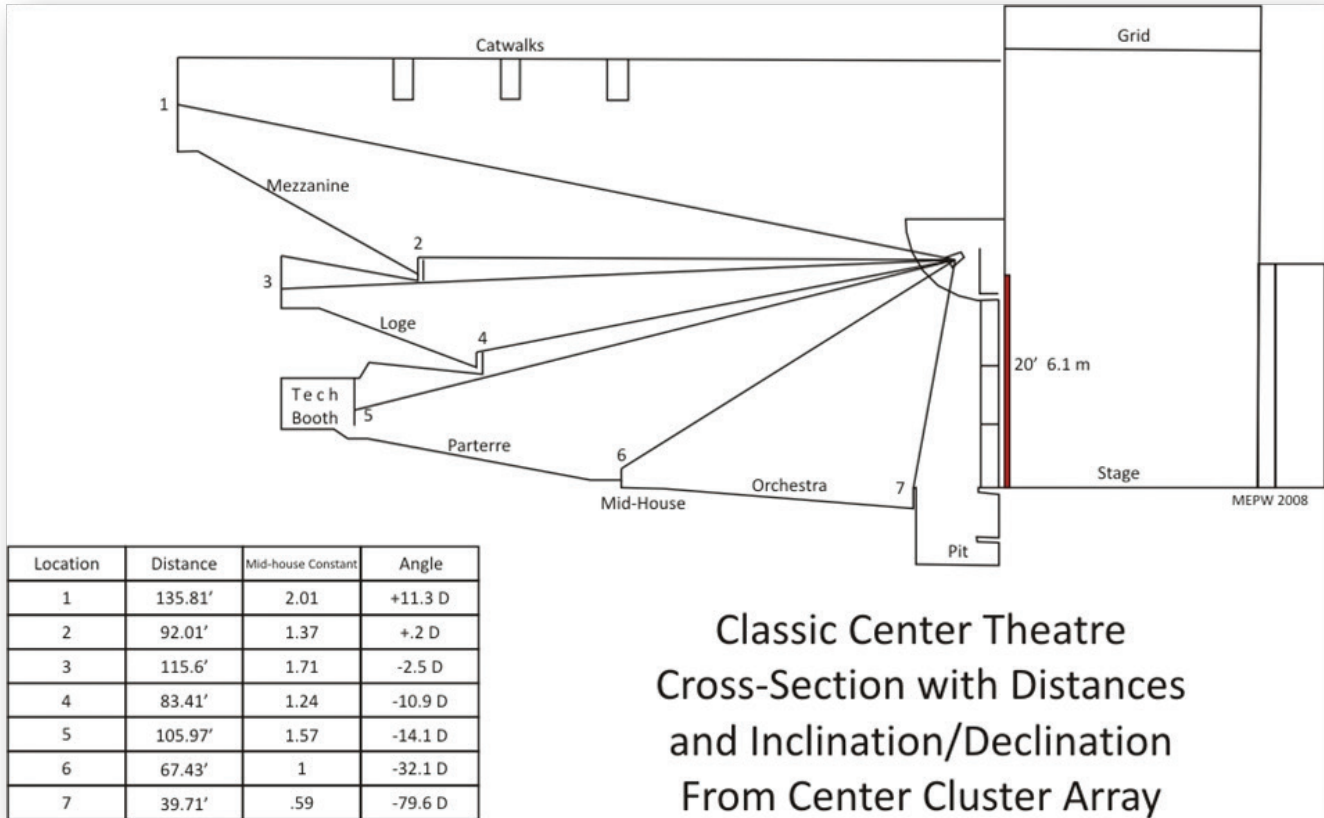
Forklift is available for street level loading, but not on dock or stage

Two trucks can unload/load at one time

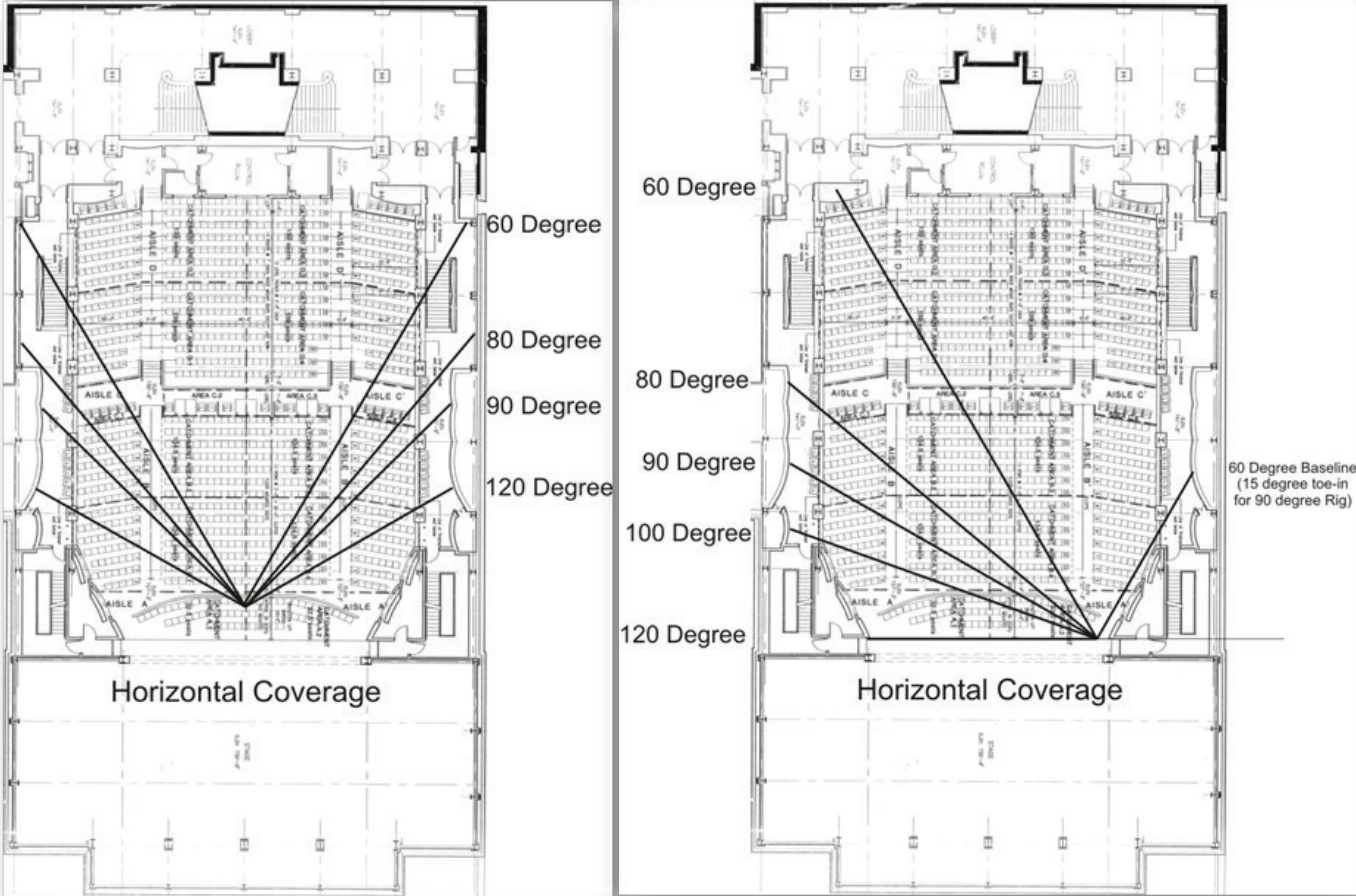
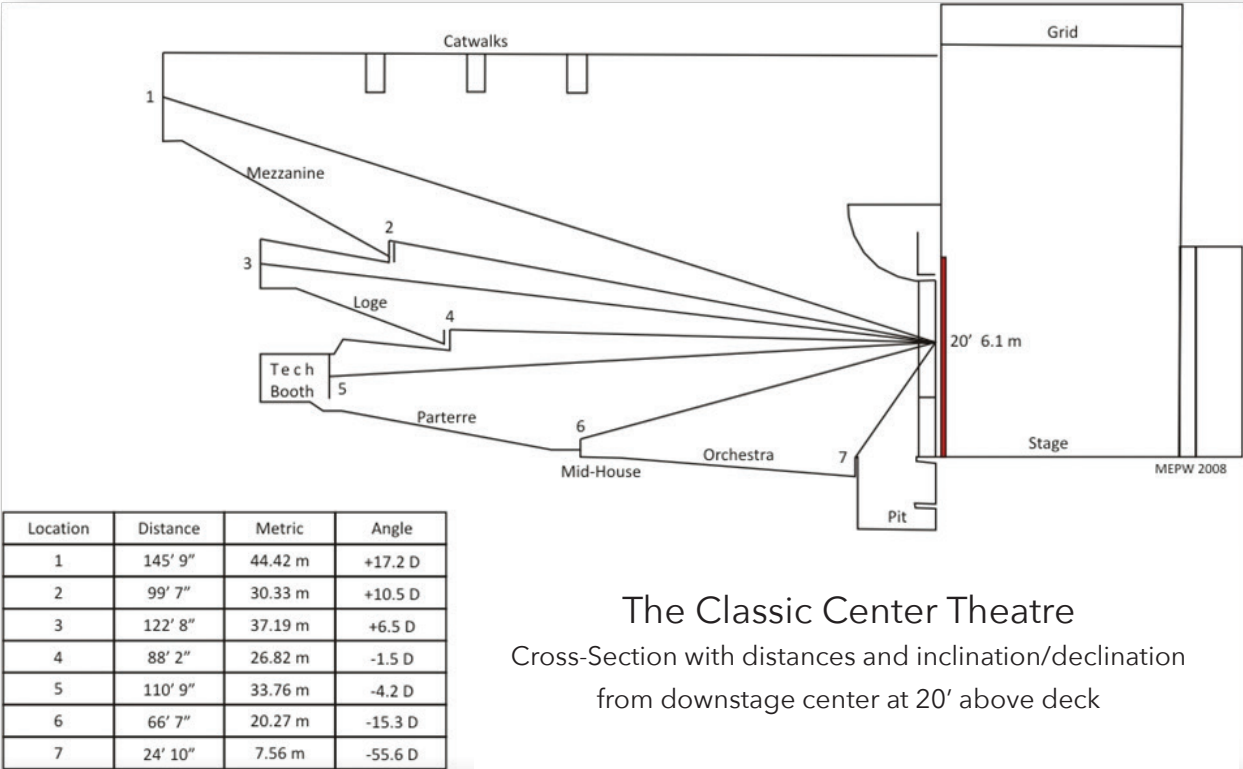
**Theatre loading dock does not have its own address but 130 Foundry, Athens, GA 30601 will get you close. Loading dock is located behind our Theatre on Foundry St. directly across from the entrance to The Classic Center parking deck.*



STAGE LAYOUT & DISTANCE DIAGRAMS



STAGE LAYOUT & DISTANCE DIAGRAMS



BACKSTAGE INFORMATION & MEASUREMENTS

Green Room & STAR Dressing Spaces

All located at stage level and are lockable

Green Room direct location from stage left

Green Room amenities: Smart television, fridge, microwave, sink, bar, soft seating, café tables, available for multi-use

Two STAR Dressing Rooms each equipped with shower and soft seating

Sub-stage Dressing Rooms & Additional Spaces

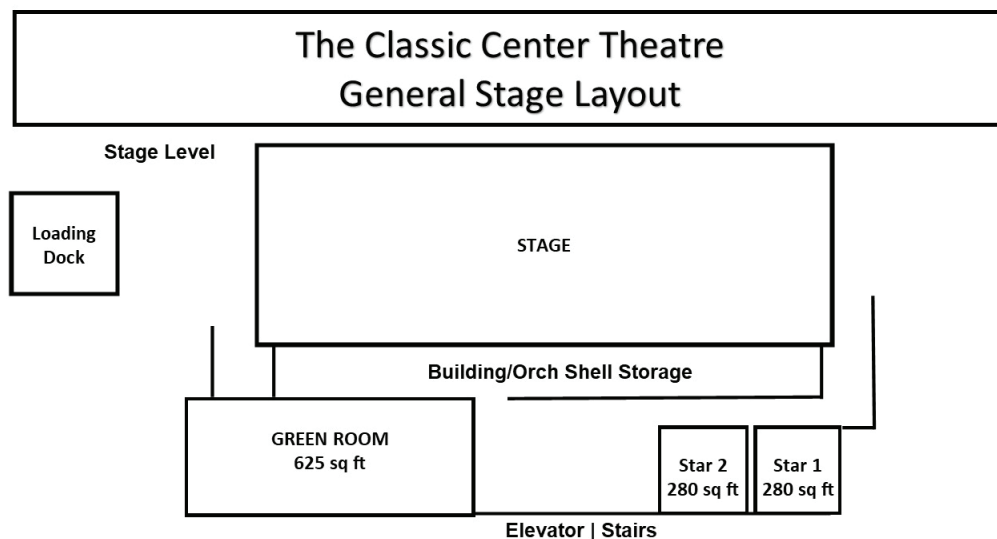
Performance style dressing spaces, these rooms are not lockable

Six large dressing rooms w/ comm.

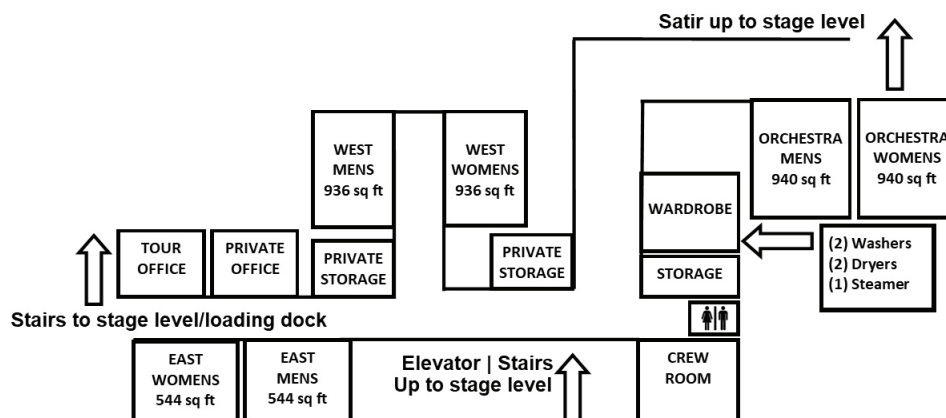
Laundry facilities available in wardrobe room. Room includes two sets of washers and dryers.

One office space located in substage to use at your discretion, internet available here.

One Crew Room available for multi-use, room will need to be advanced before tour arrival.



STAR dressing rooms have private restroom and shower
Green Room amenities include fridge, microwave, sink, bar, soft seating, television and dining tables
All dressing room spaces at this level are lockable



East Men: 6 stations, 2 Stalls, 2 Showers, 3 Sinks
East Women: 6 stations, 2 Stalls, 2 Showers, 3 Sinks

West Men: 12 Stations, 2 Stalls, 2 Urinals, 4 Showers, 4 Sinks
West Women: 12 Stations, 4 Stalls, 4 Sinks, 4 Showers

Orchestra Men: 14 Stations, 2 Stalls, 3 Urinals, 3 Sinks.
Orchestra Women: 13 Stations, 4 Stalls, 3 Sinks. 940 Sq Ft.

HOUSE INFORMATION & INTERNAL MEASUREMENTS

House

House Seating Capacity & Internal Measurements

Total Seating Capacity: 2083

Seating Capacity without Pit: 2020

Pit: 63

Orchestra: 586

Parterre: 530

Loge – 1st Balcony & 200 Level Box Seats: 392

Mezzanine – 2nd Balcony & 300 Level Box Seats: 512

**Seating scale varies*

**Numbers include sellable view obstructed inventory*

**Event related seat kills & comps can alter totals*

**Pit optional, labor costs associated with setup/removal*

Measurements from Downstage Center Deck Level

These measurements do not include the pit seating

Edge of orchestra pit rail: 10' 10"

Orchestra/Parterre crossover: 60' 2"

Rear of Parterre section (Tech Booth wall): 107' 4"

Front rail of Loge (first Balcony): 87'

Back of Loge: 123' 1"

Front of Mezzanine (second Balcony): 101' 4"

Back of Mezzanine: 149' 1"

Measurements from Downstage Center, 20' above Deck level:

Edge of Orchestra Pit Rail: 24' 10"

Orchestra/Parterre crossover (mid-house mix position): 66' 7"

Rear of Parterre section (Tech Booth wall): 110' 9"

Front rail of Loge (first Balcony): 88' 2"

Back of Loge: 122' 8"

Front of Mezzanine (second Balcony): 99' 7"

Back of Mezzanine: 145' 9"

FREQUENTLY ASKED TECHNICAL QUESTIONS

Q: Can we lag into your stage floor?

A: Yes, there may or may not be a charge for repair, depending on contractual language and advance.

Q: What are the dimensions of your black masking legs?

A: Legs are 12' wide and 34' high

Q: Where is the Stage Door (performer entrance to the building) located?

A: Stage left, same loading dock

Q: Where is your dock located relative to the stage?

A: Stage left, with a total distance of around 50' from the farthest truck to the edge of the deck.

Q: Where is truck parking for our stay?

A: Up to 2 trucks can live in at the dock, depending on the length of the stay and other factors. There are parking spaces that can be "bagged" just behind the building and various other parking areas adjacent to the building.

Q: Do you have a parking spot for our bus?

A: Up to 2 busses can live in the sheltered area adjacent to the loading dock. There are additional spaces on Foundry Street, and other options around the facility.

Q: Do you have Shore Power for our bus?

A: Yes, there are three 60 Amp outlets for buses to plug into. There is a charge associated.

Q: Do you have storage space for dead cases?

A: There are many places on the deck, the loading dock, hallways, and other areas that can hold dead cases.

Q: Do you have levelers or dock plates for your dock?

A: There is a built-in truck access plate on the dock left and an aluminum one for dock right.

Q: Where is your fly rail located?

A: Stage right, deck level. Pin rails at 32', both sides of the stage. Loading bridges at 63' and 70', stage right.

Q: How much weight do you have available for your fly system?

A: Estimated around 50,000 lbs.

Q: What kind of grid do you have (channel, grating, I-Beams)?

A: Grid is safety grating type, with 2x I-beams every 12'. Rigging allowed only from I-beams, not from subway grating.

Q: How long is the Snake run from backstage to the FOH Mix Position?

A: Either side of the stage can reach mid-house mix position with 150' of cable, run on floor level, with aisle crossings.

Q: What are the dimensions of the FOH Mix Position?

A: 16' x 10'

Q: Do you have a Dressing Room Paging system?

A: Yes, accessible from downstage right, XLR jack.

Q: Do you have a Hearing-Impaired System?

A: Yes, a digital system, dialed in from the sound booth by the House Audio Engineer.

FREQUENTLY ASKED TECHNICAL QUESTIONS

Q: Do you have any storage space FOH for console cases?

A: Dead cases from FOH are stored outside in the loading dock area. Fire exit concerns dictate this.

Q: What is the physical path gear must take to get from the dock to the FOH Mix Position?

A: There is a service hallway house right that is level with the loading dock. Cases over a certain size (i.e., large format mixers) **will not** be able to take this path and must use the orchestra pit lift as an elevator. This must be done early on show days due to setting pit seating or set-up. A third option is fork-lifting from the dock to street level and rolling around to the service hallway. There is an additional labor charge for this.

Q: Do you have 3 un-patched com lines from backstage to the spot booth?

A: There are no “dry-lines” to the spot booth, currently. A 250’ cable can be run up the stairs stage right and to the booth, if needed. There is a house comm line and backstage paging speaker with volume control in the booth.

Q: Do you have a production office for us?

A: There are several options. The “East Women’s” dressing or tour office located in Theatre sub-stage near the loading dock entrance stairwell are most popularly utilized for this. STAR dressing rooms are also an option if tour is willing.

Q: Do you have wireless internet available for us?

A: All internet access in the Theatre and dressing rooms is advanced with Entertainment Management.

Q: Do you have ropes for doing cable picks?

A: Yes, Stage line II artificial fiber ropes from the pin rails on both sides of stage (at 32’), through sheaves on the grid.

Q: Can we use Haze in your space?

A: Yes. We prefer water-based haze and fog, as it tends to have fewer false alarms in the fire system. Hazing should be advanced before your event load. Per the Clarke County Fire Marshal, we cannot place our fire alarm system into “bypass mode” so we suggest that use of haze be as conservative as your production will allow.

Q: Can we use your FOH lighting instruments?

A: Yes, generally, all Theatre inventory is available for show use. There is a charge for some items, such as spotlights. Extra labor costs may be associated depending on extent of lighting requests.

Q: Do you have Cam-Locks on your power disconnects or do we need bare tails?

A: Cam-Locks on all 4 power sources in the Theatre: (2) 400 Amp 3 Phase, (1) 200 Amp 3 Phase (1) 100 Amp 3 Phase

Q: Where are House Lights operated from?

A: House and stage lights can be operated from downstage right and lighting booth at back of the Orchestra/Parterre.

Q: How many and what kind of Follow Spots do you have?

A: We have 4 (new as of winter 2020) Lycian 2060-12 1200W M2 Medium Throw Lens.

Q: Do you have a work room for the Wardrobe Department?

A: There is a Wardrobe room in the Sub-stage hallway. It has two washers and two dryers. We have one steamer and one ironing board in house, please advance with Entertainment Management before your event load in.

Q: Do you have an elevator for accessing multiple levels?

A: There are 2 elevators available in the Theatre- one for backstage and one for theatre house level access.

Q: Does your local labor provider have hourly minimums on calls? Does your run crew require a break between the end of the show and the beginning of the load out?

A: Yes, we have 4-hour minimum, including show calls. There is a 15-minute break for show crew before the out.

POWER & LIGHTING

Power

(2) 400 Amp disconnects (Stage Left Wing) Cam-Lok “J” Series plugs E1016 — For cable size #2-4/0, 600 volts, rated up to 400 amperes continuous (Ground and Neutral sex-reversed)

(2) 200 Amp disconnect (Stage Left Wing) Cam-Lok “J” Series plugs E1016 — For cable size #2-4/0, 600 volts (Ground and Neutral sex-reversed)

(1) 100 Amp disconnect (Stage Left Wing) Cam-Lok “J” Series plugs E1016 — For cable size #2-4/0, 600 volts (Ground and Neutral sex-reversed)

(3) 60 Amp shore power (Loading Dock) *All power on catwalks is Stage Pin Connection, no Edison connection or DMX ports

Lighting

60 overhead LED PARs ETC Color Source

12 LED Cyc light fixtures, 12 additional ground row fixtures available

FOH incandescent lighting, 15 - 5 fixtures for specials, 16 - 10 fixtures or FOH wash

Control

Strand NEO X5 with 1 monitor

Dimming: Strand CD80 modules, Supervisor Racks

465 circuits

278 dimmers at 2.4k, 7 dimmers at 6k

10 constant non-dim control

All LEDs have constant power dimmers

House lights- 14 dimmers at 2.4k, 6 dimmers at 6k

Lighting Circuit Positions:

3 catwalk rails, Front of House

Balcony

rail (Mezzanine level)

2 rails, Stage Left/Stage Right tormentors

Box boom positions – 3 left and right at Orchestra Boxes - *Cannot support movers*

Stage- 1 permanent Electrics Batten, 4 feet upstage from plaster

16 – 6 circuit drops from grid, 5 currently in use

18 – 3 circuit pockets in floor, Stage Left/Right/Upstage

24 circuits Stage Left/Right Wings

Inventory: All Ellipsoidal instruments are Strand SL

Please note that not all instruments are available at any one time, due to installations in other parts of the facility

30 - 5 degree

36 - 10 degree

18 - 19 degree

26 - 26 degree

36 - 36 degree

60 – LED Color Source Pars

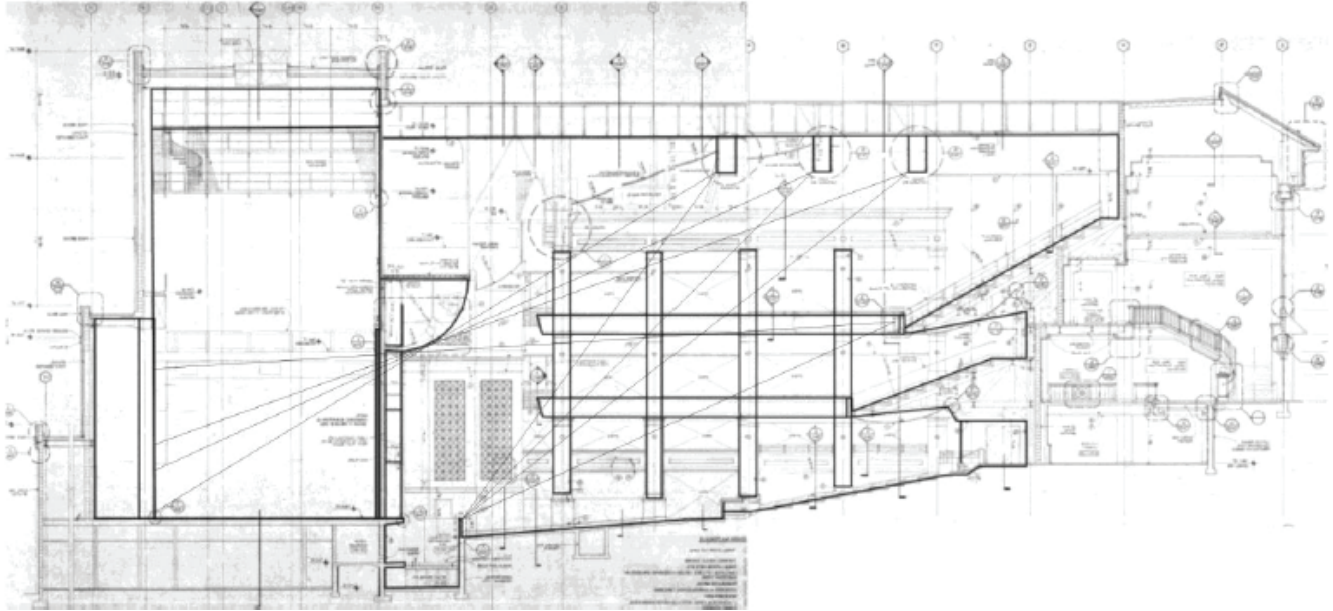
24 – LED Color Source Cyc Lights

4 – Lycian 2060-12, 1200wM2 Spotlights

LIGHTING POSITIONS, DIMMERS & INSTRUMENTS

The Classic Center Theatre FOH Lighting Position Angles

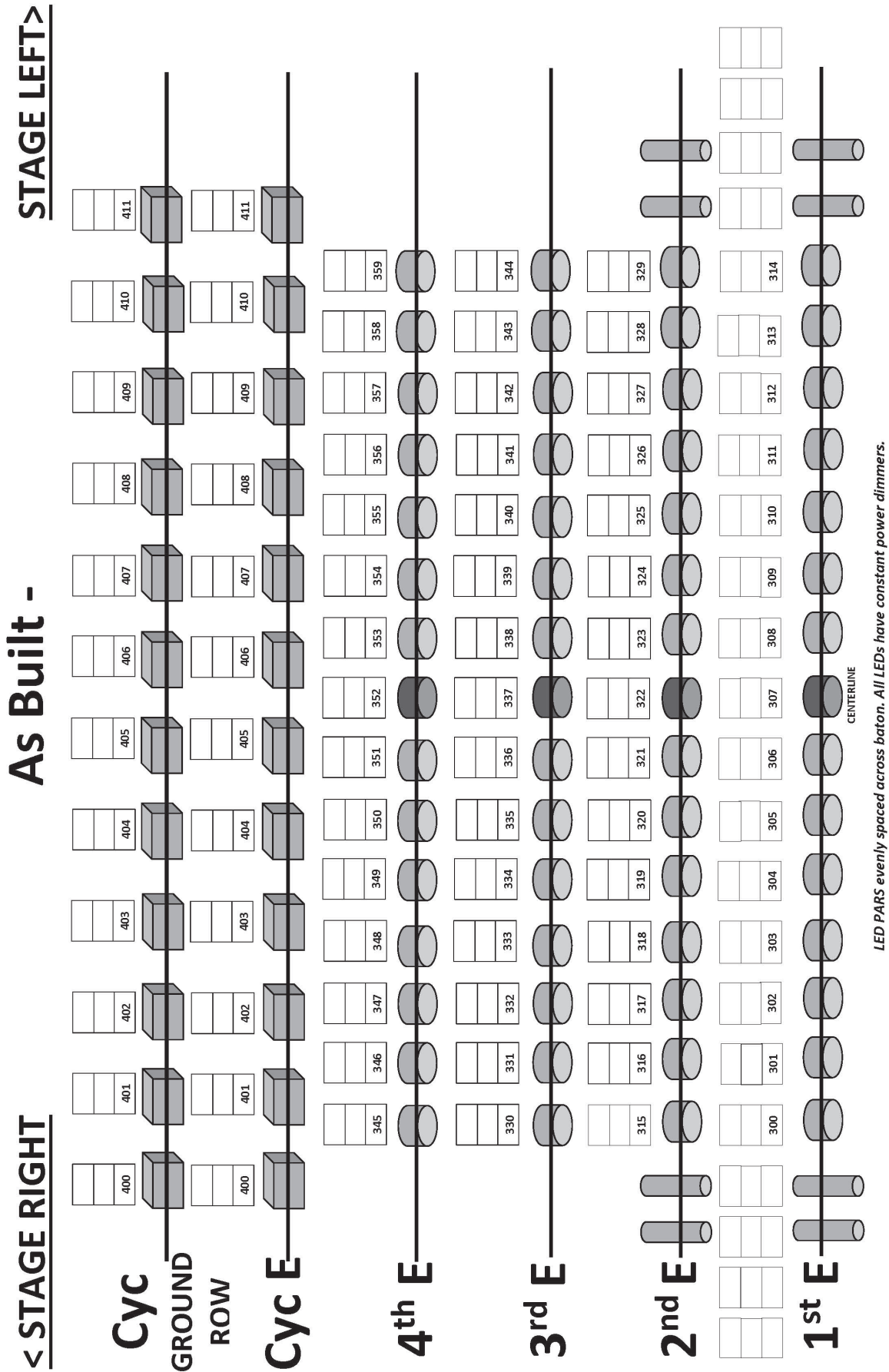
This graphic illustrates the maximum lighting coverage from Catwalks and Mezzanine Rail. Valence and border trim height will affect this coverage.



House Light Dimmers and Instruments

Fader Name	# Instruments	Focus Area	Location	Dimmer Number
LOW ORCH	8	Lower Orchestra	Catwalk #2	488
UP ORCH	9	Upper Orchestra	Catwalk #2	489
LOW PART	6	Lower Parterre	Catwalk #3	490
BAL FRT	4	Lower Loge	Catwalk #3	491
UP BAL	11	Upper Mezzanine	Catwalk #4	474-476
UP BAL REAR	11	Lower Mezzanine	Catwalk #4	477
LOW BAL		Upper Loge	Loge Ceiling	478-479
PART		Upper Parterre	Parterre Ceiling	480-481
GAL		Galleries	Gallery Ceiling	482, 492
DÉCOR		Galleries	Gallery Ceiling	483-484
SCONCES	486	Gallery Walls	Gallery Walls	485
SP				

LIGHTING POSITIONS, DIMMERS & INSTRUMENTS



AUDIO SYSTEM INFORMATION

Consoles

Yamaha M7CL - 48 channel digital console.

Midas Venice 320- (permanent house console, located in Tech Booth)

FOH Rack Mounted Gear & Snake

(2) Klark-Teknik DN360 Equalizers.

(1) Presonus ACP88 8 channel compressor/limiter/gate.

(1) Tascam CD-OU1 CD player.

(1) Tascam CD 401 MKII CD player.

Snake - Belden 48 x 8 Channel, runs to mid-house with 3-way splitter: mains, monitor, and auxiliary.

1 100' 48 Channel Belden snake extension, (no returns).

1 25' 48 Channel Belden snake extension, (no returns).

2 Multi fans, 15'. (one is 48 channels; one is 48 x 8).

Main Speakers

8 (4 per side) EV XLC 127+ Line Array speaker cabinets. (120° horizontal coverage)

4 (2 per side) EV XLC 215 Line Array Subs. These are on wheels and are floor stacked

2 EV DX 38 Processors, one per side

2 EV P3000 –subwoofer amplifiers

2 Crown XTI 4000 amplifiers

2 Crest Pro 5200 amplifiers

Proscenium Center Cluster

8 EV XLE Line Array speaker boxes (120° H x 10° V).

2 EV QRX 218s double 18" speaker subwoofer cabinets.

3 EV CPS2 amplifiers for highs and midrange.

1 EV CP4000S amplifier for subs.

1 EV Dx38 Digital Processor.

Delays and Fills

2 EV ZX1 delay speakers, under-hung from catwalk for Mezzanine (upper balcony).

44 speakers Front of Pit Rail – 70 volts.

Delay speakers under balconies and all boxes – 70 volts.

Ashley amplifiers – FTX series, Ashley equalizers – GQX series, 2 Peavey IDL 1000 delays

Monitors:

4 EV ZX1 monitors.

3 Ashley GQX series equalizers.

3 EV CPS2 amplifiers.

Microphones:

5 Shure Beta 58.

6 Shure SM57.

2 Shure SM81

AUDIO SYSTEM INFORMATION

4 EV ND 468 for brass, percussion, and guitar amps
1 EV ND 868 for bass drum
2 EV RE2 Wireless Handheld/Lavalier Combination units
6 Shure ULXP4 receivers/ULX1-M1 belt packs/ (5) SM 87C handhelds (662-698 MHz)

Cabling:

1 100' Whirlwind 6 channel by 3 sub snakes
2 50' CBI Performer series 12 channel sub snake
Assorted microphone, insert, and power cables

Communications:

Production Intercom system with 8 belt packs and headsets that interface with Clear Com belt packs.

ADA Assisted Listening: Williams Sound Large-Area dual FM & wi-Fi System including t55 FM transmitter and ANT 005 Remote Coaxial Antenna

- 55 Williams Sounds R37 FM Receivers
- 55 Williams Sound BAT 026 – 2 AA NiMH Rechargeable Batteries
- 5 Williams Sound CHG 3512 12-Bay Recharger
- 210 Comfort-Fit Stereo Earbuds
- 55 Williams Sound EAR 022 Surround Earphone
- 10 Panasonic Stereo Headphones

Download WAVECAST App on your smart phone to connect to our hearing assist wi-fi network to access assisted listening from your mobile device.

Midhouse Mix Position Information

- If footprint for production is larger than the allocated space in the house, venue may be forced to kill seats
- Fire Marshall requires a 36" wide walkway at the parterre side of the tech area to allow ADA egress
- Any area not used by equipment and personnel will be released back to the house for the purpose of selling those seats. The tech area should be condensed as far as is practical on a show-by-show basis, while load-in and set-up are occurring. Box Office and FOH Management will walk through the house and adjust their sales and seating plan to match the reality of the show prior to doors.
- Every effort will be made by House Crew & venue staff to minimize view impairment as load-in is in process.
- FOH tables need to be dressed in linen when possible
- Workboxes and or empty cases should go to the hallway house right for the show. We ask that tour applies 36" minimum walkway for safe egress when storing cases. If items are stored in the front lobbies of the theatre, a screen must be placed over the items.
- Always place and cover cable runs with the safety of our guests in mind. All trip hazards will need to be minimized before doors.

RIGGING & FLY-RAIL INFORMATION

Rigging System

Type: Counterweight, single purchase, T-track

49 line sets, including:

- 41 available line sets, not including: main valence, main curtain, orchestra shell sets or SR/SL tabs
- 3 Truss Battens (permanent Orchestra Shell Ceiling)
- 2 Stage Right/Stage Left truss battens (Side Tabs)
- 1 dedicated Electric
- 2nd, 3rd, 4th, and Cyc electrics are fed by dropped mults
- All spotting lines are changed to Stage-Line II artificial fiber rope, as of November 2019.

Measurements

- 1st. Electric maximum out trim is 47' 7", permanently fixed
- All remaining Lines out trims are 72' 4"
- Grid height from Stage Floor: 75'
- Distance between lines varies, please refer to line set schedule
- Batten length: 66'
- Battens which cannot be cleared, Please refer to line set schedule

Available sheaves for spotting:

- 17 – 5 line divider blocks
- 23 – Single blocks without well placement "ears"
- 12 – Single blocks with well placement "ears"

Weight

- Line-sets #37 – #43, 6' Arbor- Capacity 1,535 Lbs.
- Line-sets #1 - #36, 8' Arbor- Capacity 2,148 Lbs.
- 1st Electric (E1), 12' Arbor- Capacity 3,377 Lbs.
- Orchestra Shell Ceiling Sets (S1, S2, S3)- 14' Arbor- Capacity 3,991 Lbs.

Stage Weight Colors and Weights

- White:** 20 Lbs. / 9.07 kg.
- Blue:** 25 Lbs. / 11.34 kg.
- Red:** 30 Lbs. / 13.61 kg.

RIGGING & FLY-RAIL INFORMATION

LINE #	LOCATION	HOUSE HANG	Weight	ARBOR CAP	SHOW HANG	WEIGHT	NOTES
FC	3"	Fire Curtain			Not Available		(Distances are from the plaster line)
1	11"	Main Valence	330 Lbs.	2,148 Lbs.	Not Available		Cannot Strip
2	1' 8"	Main Curtain	1350 Lbs.	2,148 Lbs.	Not Available		Cannot Strip
3	2' 5"			2,148 Lbs.			
4	3' 2"			2,148 Lbs.			
E1	3' 11"	1st Electric	330 Lbs.	3,377 Lbs.			Dedicated Electric, out trim 47' 7"
5	4' 8"			2,148 Lbs.			
S1	5' 5"	Shell Ceiling	2220 Lbs.	3,991 Lbs.	Not Available		Cannot Strip
6	6' 2"			2,148 Lbs.			
7	6' 11"	Black Scrim	75 Lbs.	2,148 Lbs.			
8	8' 2"	Border	200 Lbs.	2,148 Lbs.			
9	8' 11"	#1 Legs	125 Lbs.	2,148 Lbs.			
10	9' 8"			2,148 Lbs.			
11	10' 5"	2nd Electric	480 Lbs.	2,148 Lbs.			
12	11' 2"			2,148 Lbs.			
13	11' 11"			2,148 Lbs.			
14	12' 8"			2,148 Lbs.			Often used for video screens
15	13' 5"	Full Stage Black	330 Lbs.	2,148 Lbs.			
16	14' 2"	Midstage Traveler	660 Lbs.	2,148 Lbs.			Traveler track remains on batten
S2	14' 11"	Shell Ceiling	2140 Lbs.	3,991 Lbs.	Not Available		Cannot Strip
17	16' 2"	Border	125 Lbs.	2,148 Lbs.			
18	16' 11"	#2 Legs	125 Lbs.	2,148 Lbs.			
19	17' 8"	3rd Electric	385 Lbs.	2,148 Lbs.			
20	18' 5"			2,148 Lbs.			
21	19' 2"			2,148 Lbs.			
22	19' 11"			2,148 Lbs.			
23	20' 8"			2,148 Lbs.			
24	21' 5"	Border	160 Lbs.	2,148 Lbs.			
25	22' 2"	#3 Legs		2,148 Lbs.			
26	22' 11"	4th Electric	390 Lbs.	2,148 Lbs.			
27	24' 2"			2,148 Lbs.			
S3	24' 11"	Shell Ceiling	1980 Lbs.	3,991 Lbs.	Not Available		Cannot Strip
SRL		Side tabs SR	240 Lbs.	2,148 Lbs.	Not Available		Stage Right Tabs and Ladders
28	26' 5"	Border	180 Lbs.	2,148 Lbs.			
29	27' 2"	#4 Legs	150 Lbs.	2,148 Lbs.			
30	27' 11"			2,148 Lbs.			
31	28' 8"			2,148 Lbs.			
32	29' 5"	Cyc Electric	225 Lbs.	2,148 Lbs.			
33	30' 2"			2,148 Lbs.			
34	30' 11"		125 Lbs.	2,148 Lbs.			
35	32' 2"	Border	160 Lbs.	2,148 Lbs.			
36	32' 11"	Cyclorama	175 Lbs.	2,148 Lbs.			
SLL		Side Tabs SL	305 Lbs.	2,148 Lbs.	Not Available		Stage Left Tabs and Ladders
37	23' 4"			1,535 Lbs.			
38	34' 5"			1,535 Lbs.			
39	34' 10"			1,535 Lbs.			
40	35' 2"	Full Stage Black	330 Lbs.	1,535 Lbs.			
41	35' 11"	Traveler Track	350 Lbs.	1,535 Lbs.			Traveler track remains on batten
42	36' 8"			1,535 Lbs.			
43	37' 5"			1,535 Lbs.			

42 available Line Sets not including Main Valence, Main Curtain, Shell Sets, or SR/SL Tabs
 1st Electric is a dedicated electric, all other electrics are serviced by mult drops from Grid.

STAGE CURTAINS

Stage Drapes

4 Sets of Legs (12'x35')
4 Borders (60')
2 Full Stage Blacks
1 Black traveler, with fullness
1 White Cyc
1 Black Scrim
2 sets of Tab Legs

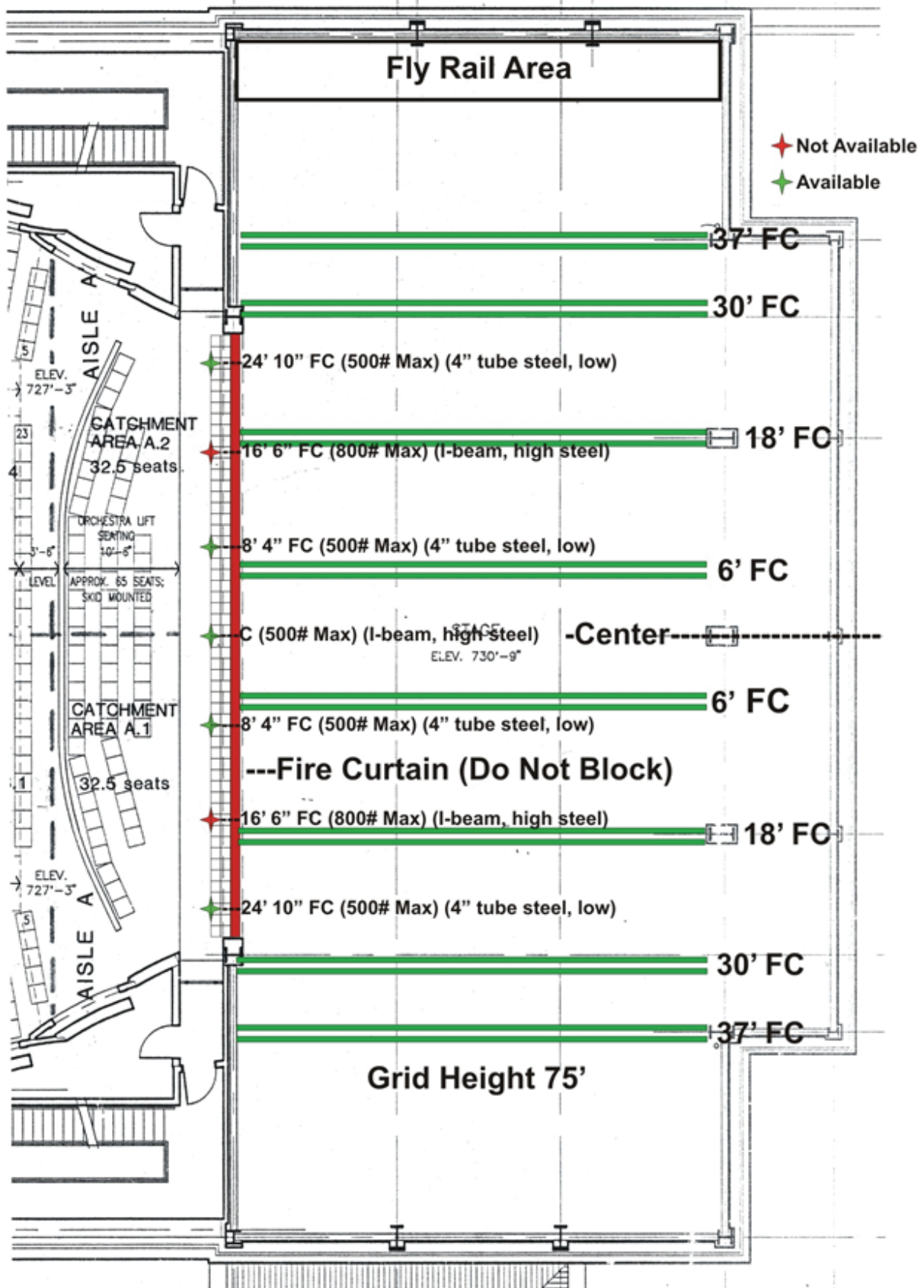
House Soft Good Weights

34' Legs- 125 Lbs. per pair.
8' border- 125 Lbs.
12' border- 180 Lbs. (120' 12' border- 205 Lbs.)
White Cyc – 120 Lbs.
Full stage black- 330 Lbs.
Traveler track and curtain- 390 Lbs.

Theatre Curtain Notes

Proscenium opening is 54' 6" wide, 31' 6" high
Battens (system pipes) are 66' 3" long
Legs are 15' wide
Legs are normally pulled back 4' to make them 11' wide, which makes an opening of 44' (default setting).
Legs can be set widest when they are tripled over, creates an opening roughly 56' wide, slightly wider than Proscenium
Side Tabs are hung at 37' from center, or 74 feet wide. They are 9' 9" from the Proscenium edge.
Cyc measures

THE CLASSIC CENTER THEATRE



Classic Center Theatre Rigging Attachment Points