



The Classic Center Theatre

Technical Specifications

Updated 26 June 09

300 North Thomas Street
Athens, Georgia 30601
Phone: 706-208-0900
Fax: 706-548-0870
www.classiccenter.com

SECTION



House:

Seating Capacity: (without Pit seating) 2059 – (with Pit seating) 2122.

Capacity by sections-

Orchestra: 568 (Includes 26 Possible Handicapped).

Parterre: 563 (Includes 4 Possible Handicapped).

Loge: 360.

Mezzanine: 480.

Boxes: 88 (Includes 8 Possible Handicapped).

Pit (Optional): 63.

Stage:

Stage Type: Proscenium.

Curved apron with Pit at Stage level.

Straight apron with Pit down.

Stage Floor: Oak, stained dark ebony.

(Note: the stage is not self-sealing. Drilling or lagging into the floor is prohibited, unless cleared in advance. There may be a charge for repair)

Basic Measurements:

Proscenium: Height 35' 10", width 54' 6".

Distance from downstage edge to the Plaster Line: 6'.

Total Stage depth from Plaster Line to Upstage Wall: 42' 5".

Stage width from center line:

Stage Left 52'.

Stage Right 45'.

Stage Wing Space:

Stage Left: 24' 6" wide x 42' 5" deep x 75' high.

Stage Right: 18' wide x 42' 5" deep x 75' high.

Orchestra Pit type: Gala Spiral lift.

Distance from Downstage edge of Apron to Downstage edge of Pit at center: 10' 6".

Pit Downstage curves from 10' 6" at center to 2' 6" at Stage Right and Stage Left.

Pit floor to stage height at "audience" or seated level- 3' 6".

Pit floor to Stage height at "intermediate" depth- 6' 6".

Pit floor to Stage height at "storage" depth- 7' 11".

Pit may be set at any level between Stage and "storage".

Loading Dock: (Stage left)

Dock height: 3' 10".

Door height: 12' 5", Door width 10' 2".

Load-In point: Directly on Stage, Dock level (Two trucks can unload at one time, fork-lift is available but not necessary).

Green Room:

Amenities: Fridge, Microwave, Sink, Bar; (with bar area of 88 sq/ft) 625 Sq/ft.

Dressing Rooms:

Stage Level- These are lockable.

2 Star Dress, each has bathroom with shower. 280 Sq Ft.

Sub-stage level- These rooms have no locks.

East Men- 6 stations, 2 Stalls, 2 Showers, 3 Sinks. 544 Sq Ft.

East Women- 6 stations, 2 Stalls, 2 Showers, 3 Sinks. 544 Sq Ft.

West Men- 12 Stations, 2 Stalls, 2 Urinals, 4 Showers, 4 Sinks. 936 Sq Ft.

West Women- 12 Stations, 4 Stalls, 4 Sinks, 4 Showers. 936 Sq Ft.

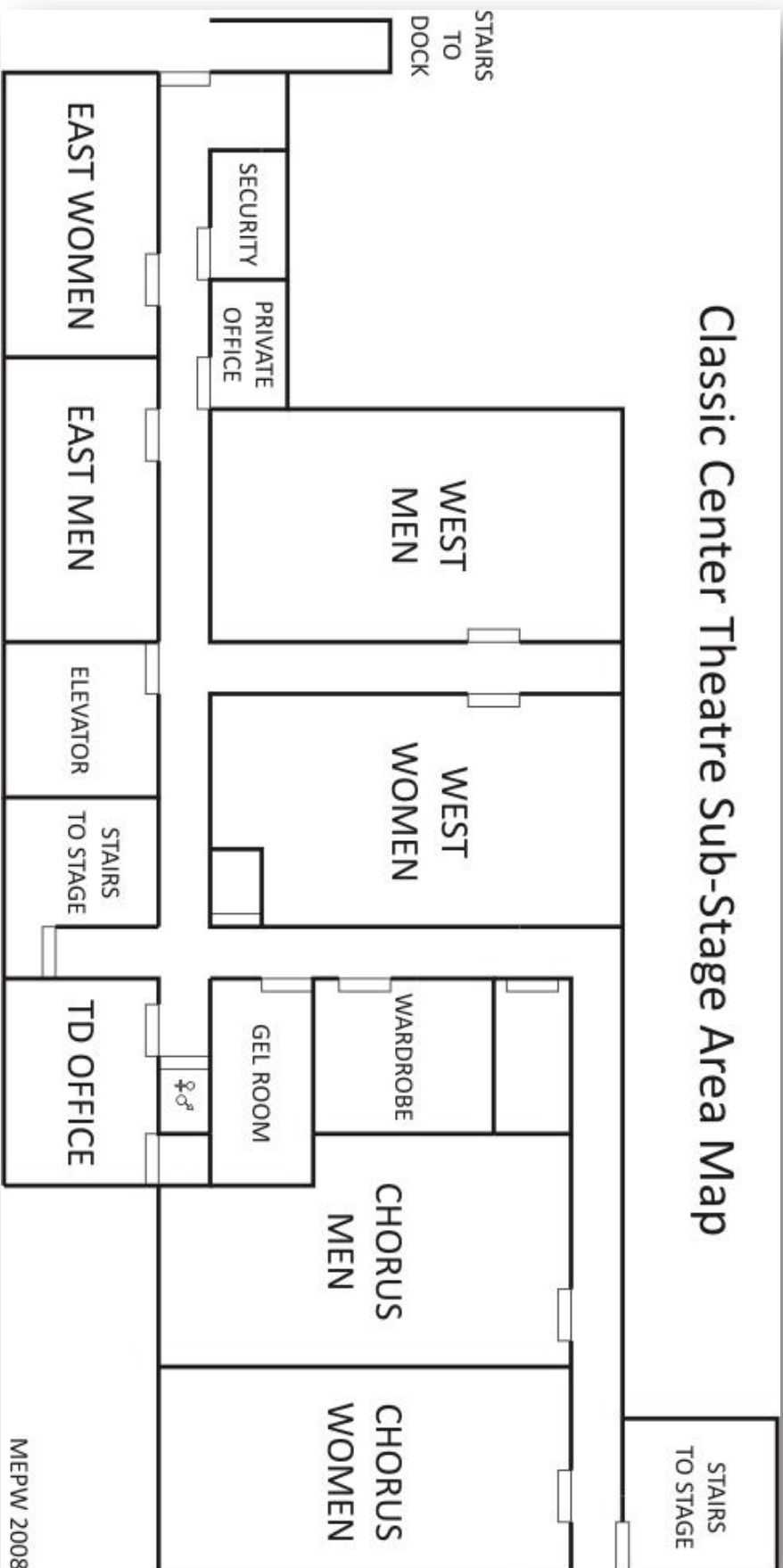
Orchestra Men- 14 Stations, 2 Stalls, 3 Urinals, 3 Sinks. 940 Sq Ft.

Orchestra Women- 13 Stations, 4 Stalls, 3 Sinks. 940 Sq Ft.

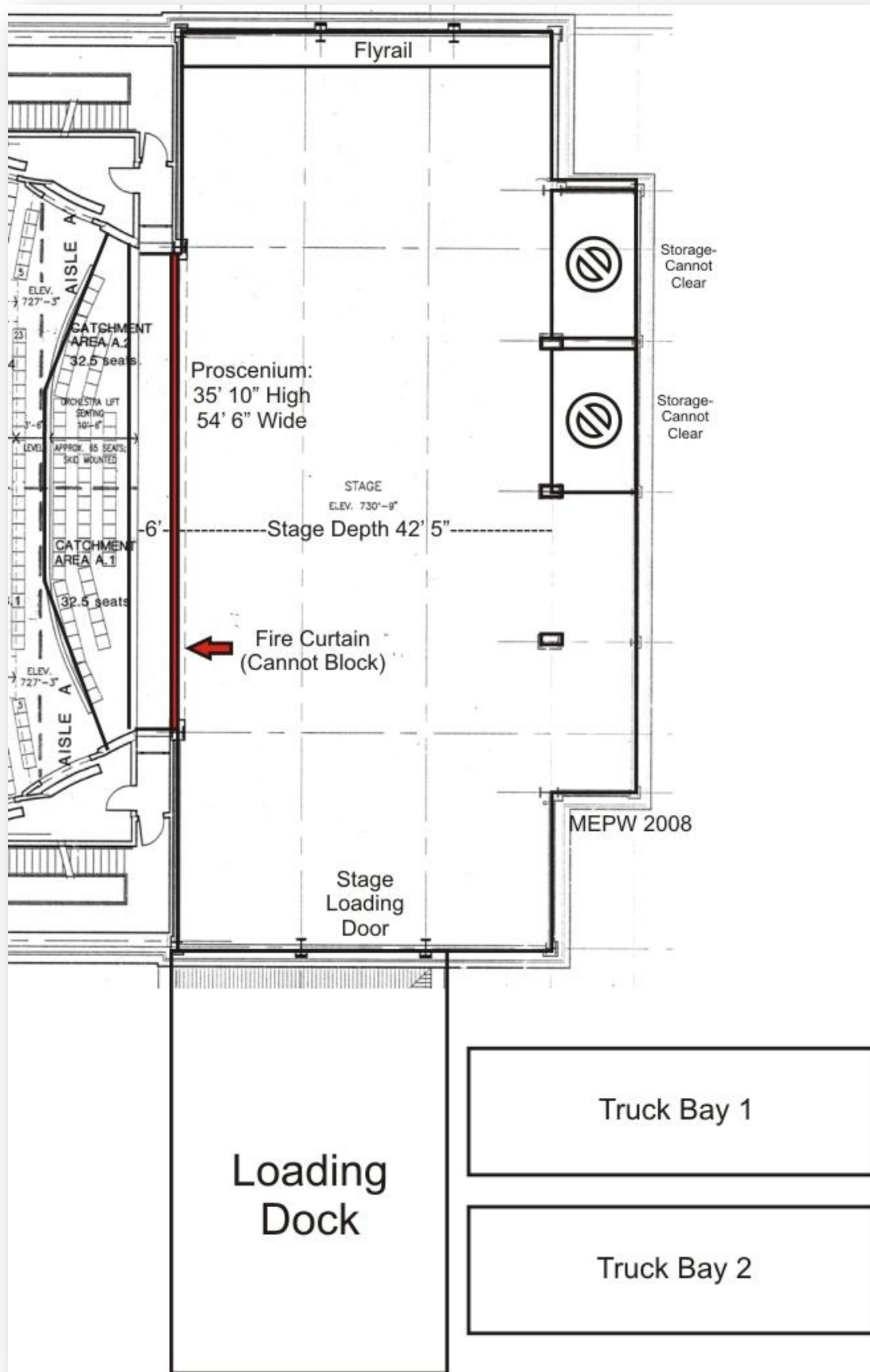
Wardrobe/Laundry:

Laundry Facilities available: (1) Washer and (1) Dryer located on the sub-stage level.

Classic Center Theatre Sub-Stage Area Map



MEPW 2008



Classic Center Theatre

Internal Room Measurements

Measurements from Downstage Center (not including Orchestra Pit), Deck level to:

1. Edge of Orchestra Pit Rail- 10' 10"
2. Orchestra/Parterre crossover (mid-house mix position)- 60' 2"
3. Rear of Parterre section (Tech Booth wall)- 107' 4"
4. Front rail of Loge (first Balcony)- 87'
5. Back of Loge- 123' 1"
6. Front of Mezzanine (second Balcony)- 101' 4"
7. Back of Mezzanine- 149' 1"

Other measurements:

1. Pit Downstage curves from 10' 6" at center to 2' 6" at Stage Right and Stage Left.
2. Proscenium: Height 31' 6", width 54' 6".
3. Distance from Downstage edge to the Plaster Line- 6'.
4. Width of House at Apron- 57' 8"
5. Width of house at Mid-House- 82' 5"